

FLOORS @ WORK

We Make It Happen

INSTALLATION INSTRUCTION

Note: This installation instruction applies to model:

NAF 1916 Toilet

NAF 1938 Toilet

NAF 1981 Toilet

NAF 1994 Toilet

BEFORE YOU BEGIN

Please read these instructions carefully to familiarize yourself with the required tools, materials, and Installation sequences. Follow the sections that pertain to your particular installation. This will help you avoid costly mistakes. In addition to proper installation, read all operating instructions.

These Instructions contain important care, cleaning and warranty information, please leave instructions to the consumer.

RECOMMENDED TOOLS AND MATERIALS

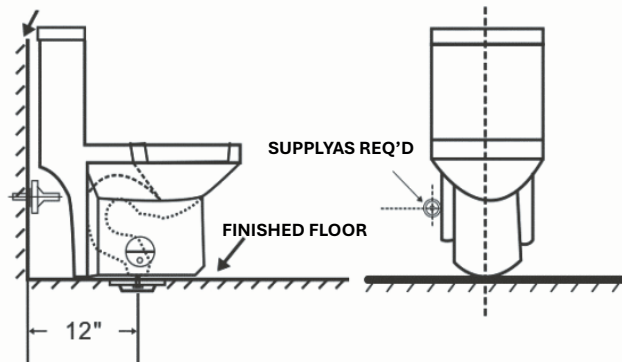
Putty Knife	Flathead Screwdriver	Adjustable Wrench	Sealant
Tape Measure	Hacksaw	Water Supply Kit	Carpenters Level

1.REMOVE OLD TOILET

- ❖ Turn off the water supply valve and flush tank completely. Towel or sponge remaining water from tank and bowl.
- ❖ Disconnect and remove the old water supply line. NOTE: If you replace valve, first shut off main water supply!
- ❖ Remove old mounting hardware, remove toilet and plug floor flange to block sewer gases from escaping.
- ❖ Remove closet bolts from flange and clean away old wax, putty, etc. from base area.

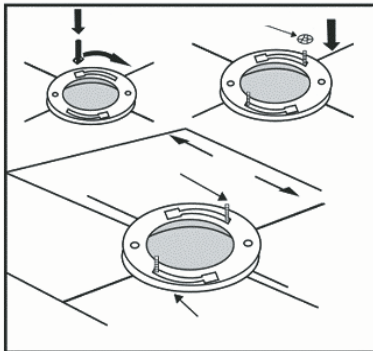
2. ROUGHING-IN DIMENSIONS

NOTE: Distance from wall to closet flange center line must be listed on chart.



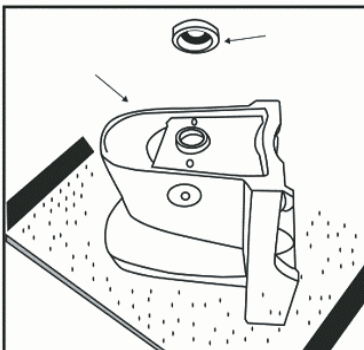
3. INSTALL CLOSET BOLTS

Insert floor bolts into flange channel with bolt head down use plastic retaining washers to hold the bolts in Full length. Floor bolts should be parallel to the wall and 6*(152mm) apart.



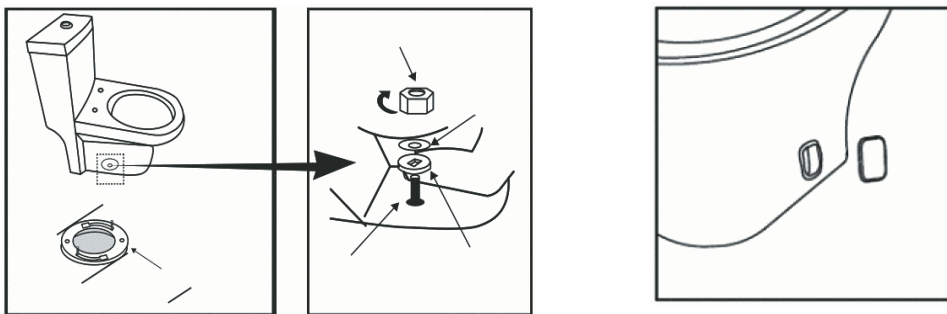
4. INSTALL WAX RING

Turn toilet bowl down onto a towel or cushioned surface. Place the wax ring around the draining outlet of the bowl and press firmly enough. Apply a thin bead of sealant around the oiled base.



5. POSITION TOILET BOWL ON FLANGE

- ❖ Unplug floor waste opening, gently place the bowl in position with the floor bolts protruding up through the hole in the base.
- ❖ Press down with slight twisting motion on the top center of bowl to compress the wax ring creating a water-tight seal.



6. INSTALLING THE COVER OF THE FLOOR BOLT

Press the cover into the side hole to get a perfect look.



Visit: www.floorsatwork.com